

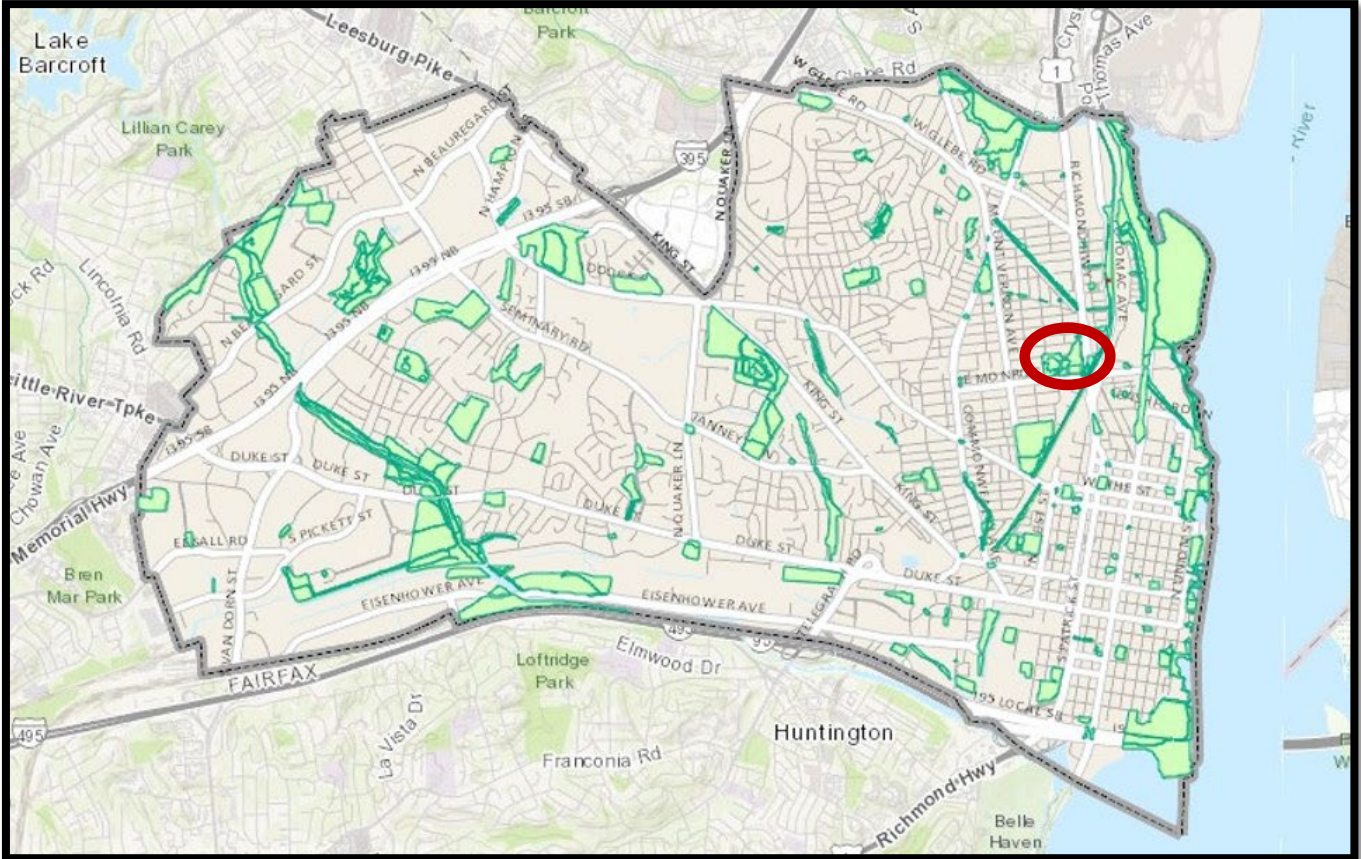


# Eugene Simpson Stadium Park Renovation

Park and Recreation Commission Update

March 16, 2023

# Project Location



# Agenda



## Commission Action Requested:

- Provide feedback and input
- Docket the project for public hearing on May 20<sup>th</sup>, 2023



# Eugene Simpson Park Ball Field Renovations

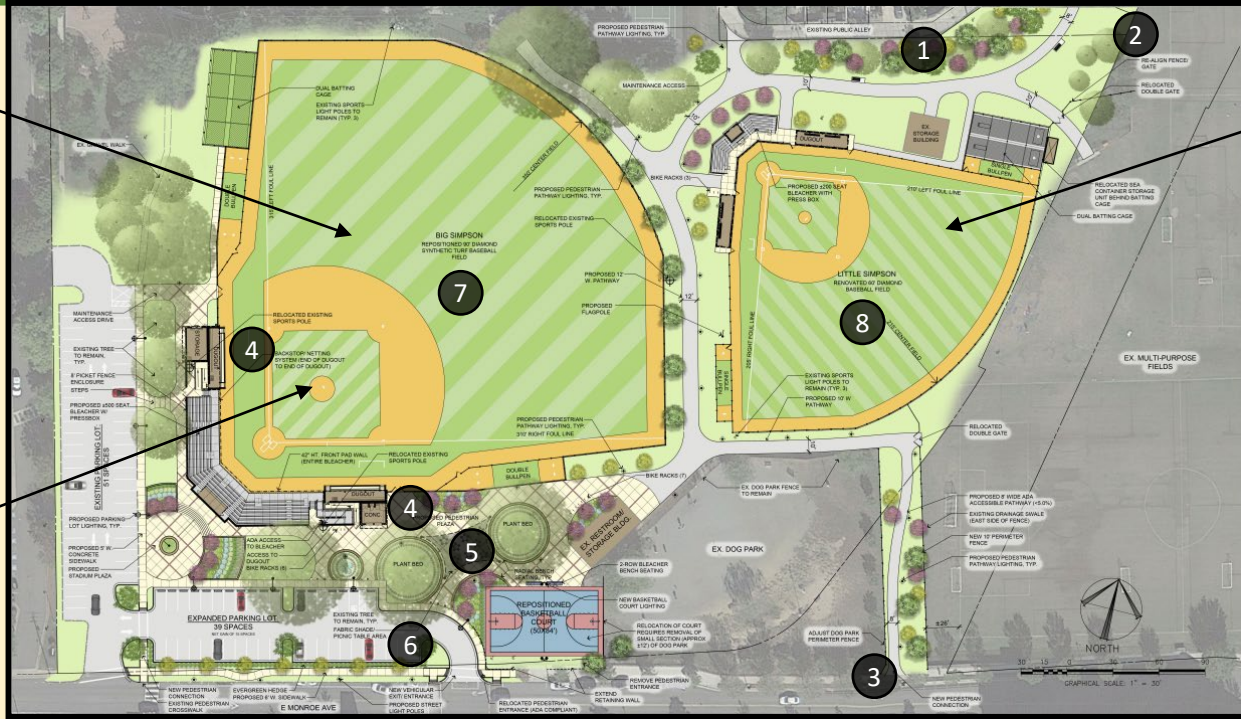
Design: 2021 to 2024 → Construction: 2024 to 2026

*Tell the City, plan your Park!*

Synthetic Turf Field

Natural Turf Field

Synthetic Turf Mound



*Project Goals:*

#1 Plant Trees along the northern alleyway

#2 Provide hardscape trails in the east half of the park

#3 Provide new ADA access from Monroe Ave.

#4 Install new bleachers, equipment storage and concessions

#5 Create a picnic area near the concessions

#6 Expand the parking lot and improve circulations

#7 Improve the turf at Big Simpson with option for synthetic turf

#8 Improve natural turf drainage at Little Simpson



# Eugene Simpson Park Ball Field Renovations

Design: 2021 to 2024 → Construction: 2024 to 2026

*Tell the City, plan your Park!*



## Project Goals:

#1 Plant Trees along the northern alleyway

#2 Provide hardscape trails in the east half of the park

#3 Provide new ADA access from Monroe Ave.

#4 Install new bleachers, equipment storage and concessions

#5 Create a picnic area near the concessions

#6 Expand the parking lot and improve circulations

#7 Improve the turf at Big Simpson with option for synthetic turf

#8 Improve natural turf drainage at Little Simpson

# Project Schedule

## 2022

- June - Community Engagement on Concept Plan
- Summer - Design Development
- Fall - Community Engagement on Revised Design

## 2023

- March & May 2023 – P&R Commission Meeting and Public Hearing
- June - Development Special Use Permit Public Hearings
- Summer/Fall - Final Design

## 2024-2026

- Early 2024 - Construction Procurement
- Late 2024 to early 2026 - Construction

# Community Engagement Process

## Completed Outreach

- 2014 Citywide Park Plan/2021 Amendment
- Direct Outreach to Stakeholder Groups
  - *ACPS* – Scoreboard, Snack bar, level of play standards, field design, storage
  - *ALL* - Snack bar, Level of play standards, storage, field design
  - *Reds* - Field design
  - *Park Donor* - Scoreboard, Field design
- June 2022 - Youth Sports Advisory Board (6/13)
- June 2022 - Park and Recreation Commission (6/16)
- January 2023 - Master Gardeners of Alexandria

## Forecasted Outreach

- March & April 2023 - Graffiti Boards
- March & April 2023 - Online Survey
- March 2023 - E-New publications
- March 2023 - Flyers
- April 2023 - Onsite Public Meeting
- April 2023 - Youth Sports Advisory Board

## Simpson Park Stakeholder Groups

Adjacent  
Neighborhood

Kettle Park  
Community  
Partners

Sports User  
Groups

Alexandria  
City High  
School

Simpson Park Dog  
Owners Group



# Commission Feedback



# Next Steps

## Commission Action Requested:

- Provide feedback and input
- Docket the project for Public Hearing on May 20<sup>th</sup> 2023

The Project Team will return in May of 2023 to respond to feedback and input received from the Park and Recreation Commission

### Additional information:

Mitch Dillon, Project Manager, DPI

[Mitch.Dillon@alexandriava.gov](mailto:Mitch.Dillon@alexandriava.gov)

Bethany Znidersic, Division Chief, RPCA

[Bethany.Znidersic@alexandriava.gov](mailto:Bethany.Znidersic@alexandriava.gov)



Pathway/ Plaza Lights



Parking Lot Lights



Shade Structure



Bleachers

(Big Simpson)



Bleachers

(Lite Simpson)



Bleacher Screening



Bio Retention



Site Improvements (View North)



Site Improvements (View South-West)



Site Improvements (View North-West)



Entry Plaza



Entry Plaza



Big Simpson Bleacher



Rear Bleacher Screening



Seating / Rear Bleacher Screening



Basketball Court / Pedestrian Plaza / Seating / Shade Structure



**C4** CONCESSIONS VISUALIZATION  
A-2016/ 12" = 1'-0"



**C1** CONCESSIONS VISUALIZATION  
A-2016/ 12" = 1'-0"



**B4** DUGOUT VISUALIZATION  
A-2016/ 12" = 1'-0"



**B1** CONCESSIONS VISUALIZATION  
A-2016/ 12" = 1'-0"



**M4** CONTEXT IMAGE  
A-2016/ 12" = 1'-0"



**A1** CONTEXT IMAGE  
A-2016/ 12" = 1'-0"





# SIMPSON PARK: EXISTING CONDITIONS

- HARD TRAILS
- BIKE ROUTE
- ATHLETIC FIELDS
- PARK BOUNDS



**KEYED LEGEND**

- 1. WIDEN PATH 6-8 FEET TO ENABLE NORTH-SOUTH STANDARD PATHWAY
- 2. ADJUST PLAYGROUND BORDERS, IMPROVE ENTRANCES, AND ADD NATURAL PLAY
- 3. ADD STROLLER PARKING AND PLAZA AT PLAYGROUND ENTRANCE
- 4. CREATE OPEN-USE AREA AND IMPROVE PLANTINGS IN PASSIVE USE AREAS
- 5. CONNECT PATHWAY TO E. DUNCAN AVE
- 6. USE BOLLARDS TO LIMIT PATHWAY DRIVING ACCESS TO MAINTENANCE VEHICLES
- 7. PLANT PERIMETER TREES TO CREATE "GREEN ALLEY"
- 8. PROVIDE NEW HARD TRAILS IN EAST HALF OF PARK
- 9. PROVIDE NEW FIELD ENTRANCE AND RAMP
- 10. IMPROVE MAINTENANCE ROUTE TO SOCCER FIELDS
- 11. PROVIDE NEW BLEACHERS WITH EQUIPMENT STORAGE UNDERNEATH
- 12. PROVIDE NEW BLEACHERS WITH CONCESSIONS BOOTHS UNDERNEATH
- 13. CREATE PICNIC AREA NEAR CONCESSIONS
- 14. EXPAND PARKING LOT
- 15. ENCOURAGE USE OF FORTY FIVE TOTAL ON-STREET PARKING SPACES ALONG E MONROE AVE AND MAIN LINE BLVD FOR SOCCER FIELD USE
- 16. IMPROVE DOG PARK TO INCLUDE LIGHTING, TERRACED HILL, TREES, AND PLAY FEATURES
- 17. ADD MAINTENANCE STORAGE SHELTER AND YARD BETWEEN FIELDS
- 18. ADD VEGETATED BIOSWALE ALONG DOG PARK EDGE AND AT MAINTENANCE YARD



2014 Citywide Parks Improvements Plan

**GRAPHIC KEY**

HARD TRAILS	PARK BOUNDS	OPEN USE AREAS	ENTRANCE PLAZAS	ATHLETIC FIELDS	DOG PARK
BIKE ROUTE					